





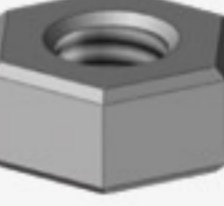









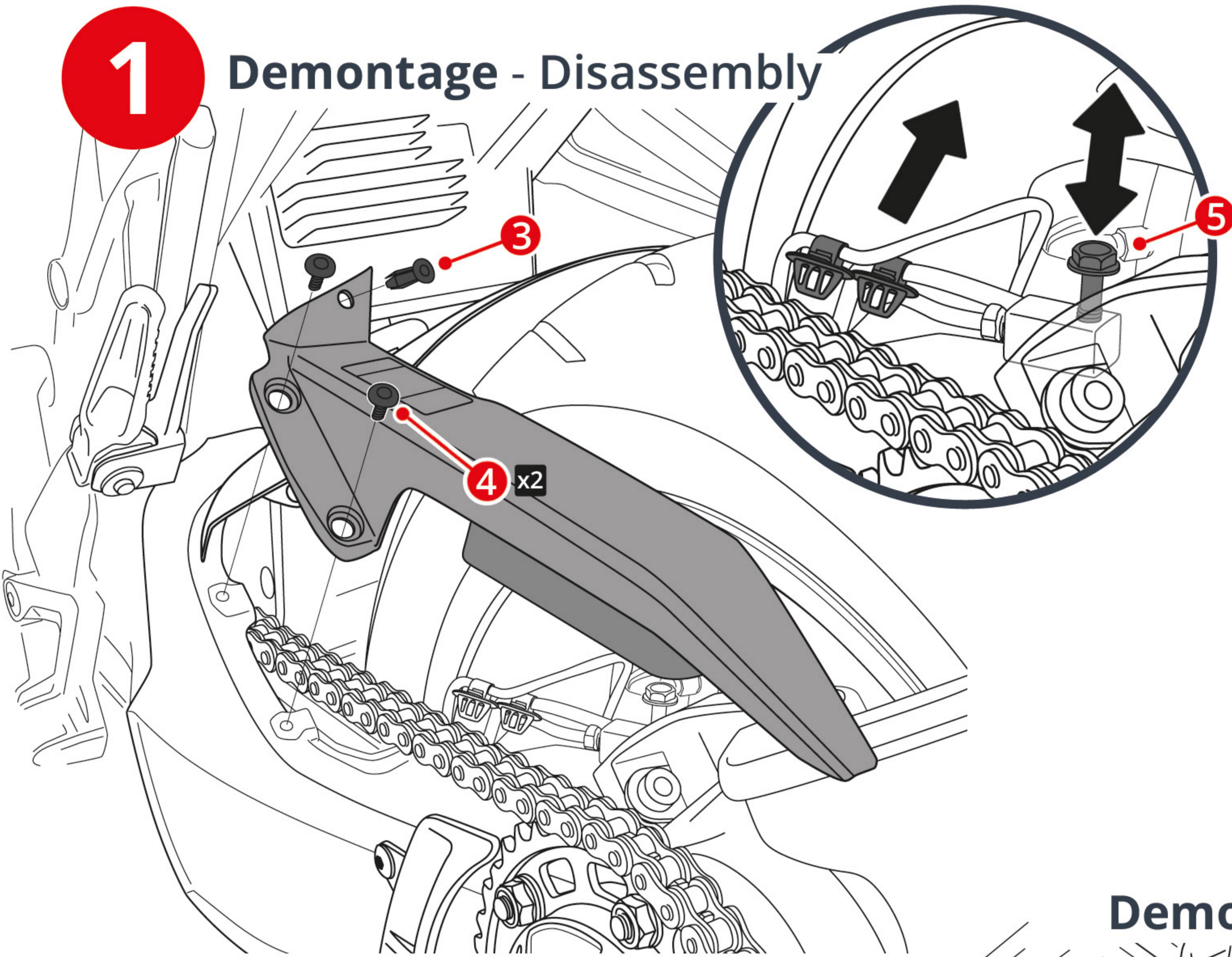
## Montage Hinterradabdeckung - Rear Hugger instructions

6580096

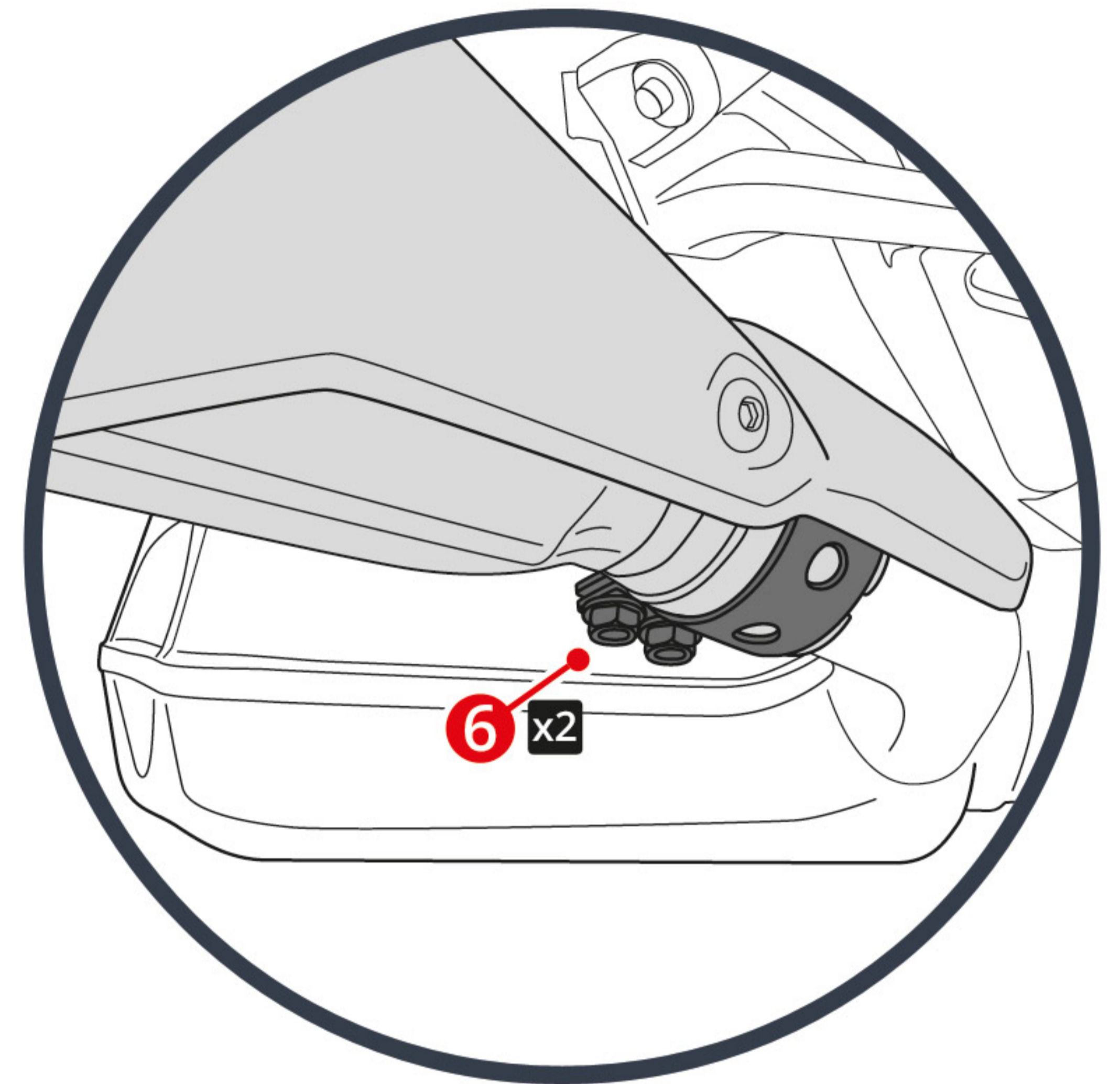


NR	TEILE / PARTS	MENGE	BESCHREIBUNG	DESCRIPTION
1		x1	Hinterradabdeckung	Ermix rear hugger
2		x1	Aluminium Kettenschutz	Aluminium Ermix chain guard
3		x1	original Kunststoffniet	Original nylon insert
4		x2	originale Kettenschutzschraube M6 x 15	M6 x 15 Original chain guard screw
5		x1	originale Sechskantschraube M6 x 40	M6 x 40 Original hexagonal screw
6		x2	originale Schalldämpferschraube M6 x 35	M6 x 35 Original silencer screw
7		x1	originale Schalldämpferschraube M6 x 35	M6 x 35 Original silencer screw
8		x1	originale Mutter M6	M6 Original silencer nut
9		x2	originale Schraube Fussraste	Original platinum footrest screw
10		x3	originale Sechskantschraube M6 x 20	M6 x 20 Original hexagonal screw
11		x4	Kunststoffunterlegscheibe Ø6 L10 H1	Ø6 L10 H1 Nylon washer
12		x4	Schraube M6 x 10 BHC	M6 x 10 Black BHC screw
13		x2	Gummieinsatz mit M5 Gewinde	Ø5 Rubber insert
14		x2	Kunststoffunterlegscheibe Ø5 L10 H1	Ø5 L10 H1 Nylon washer
15		x2	Schraube M5 x 15 BHC	M5 x 15 Black BHC screw

### 1 Demontage - Disassembly

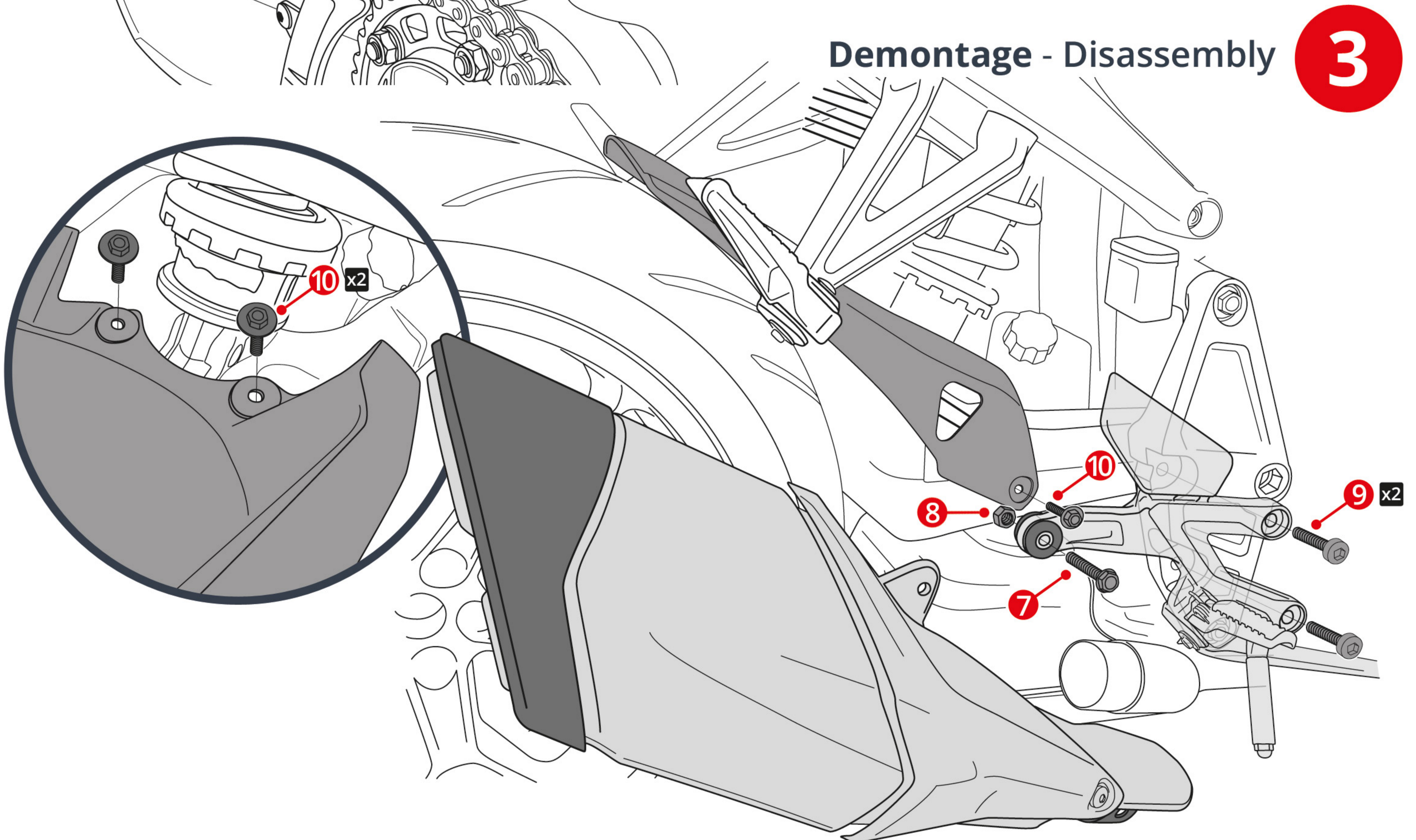


### 2 Lösen Loosen



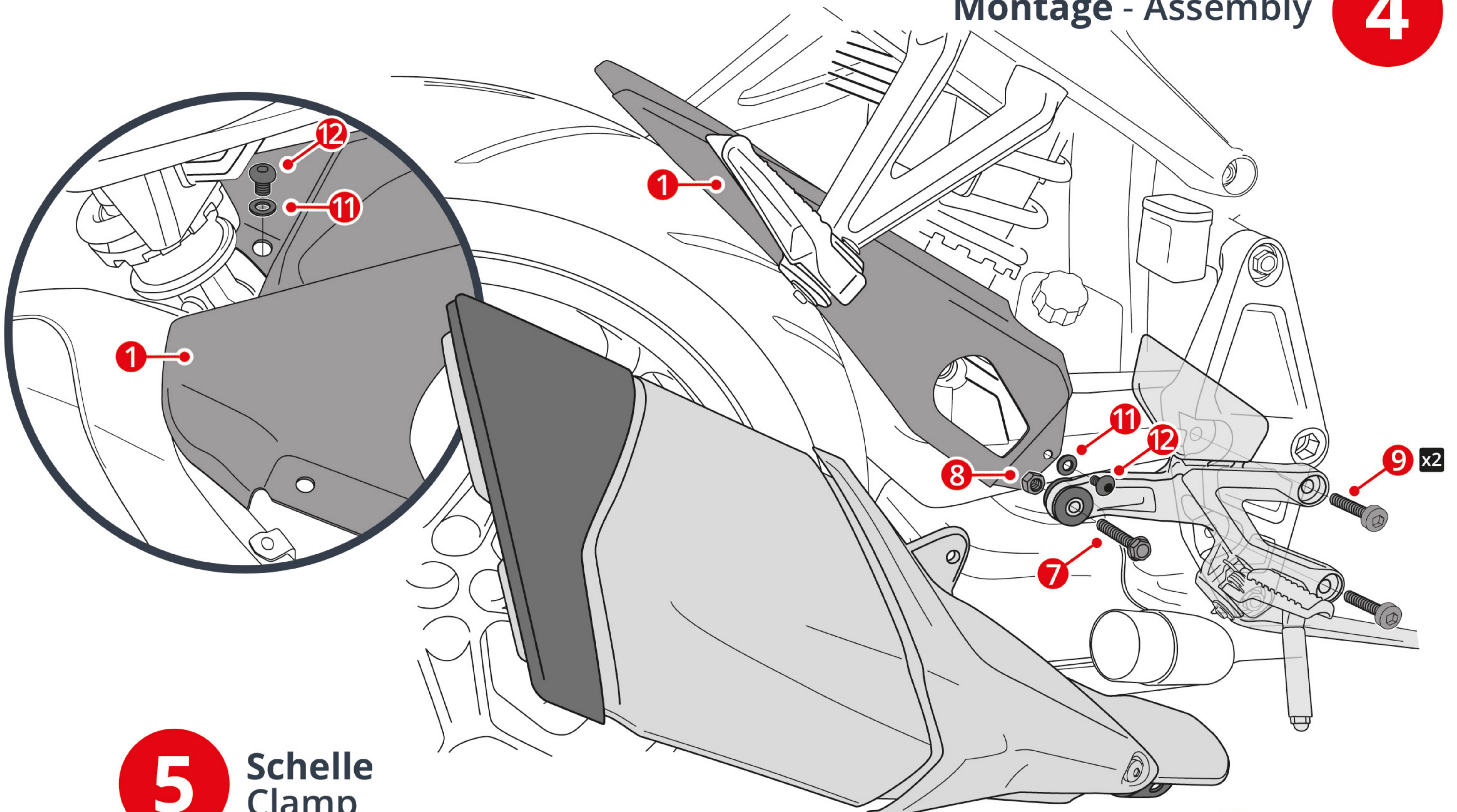
### Demontage - Disassembly

### 3

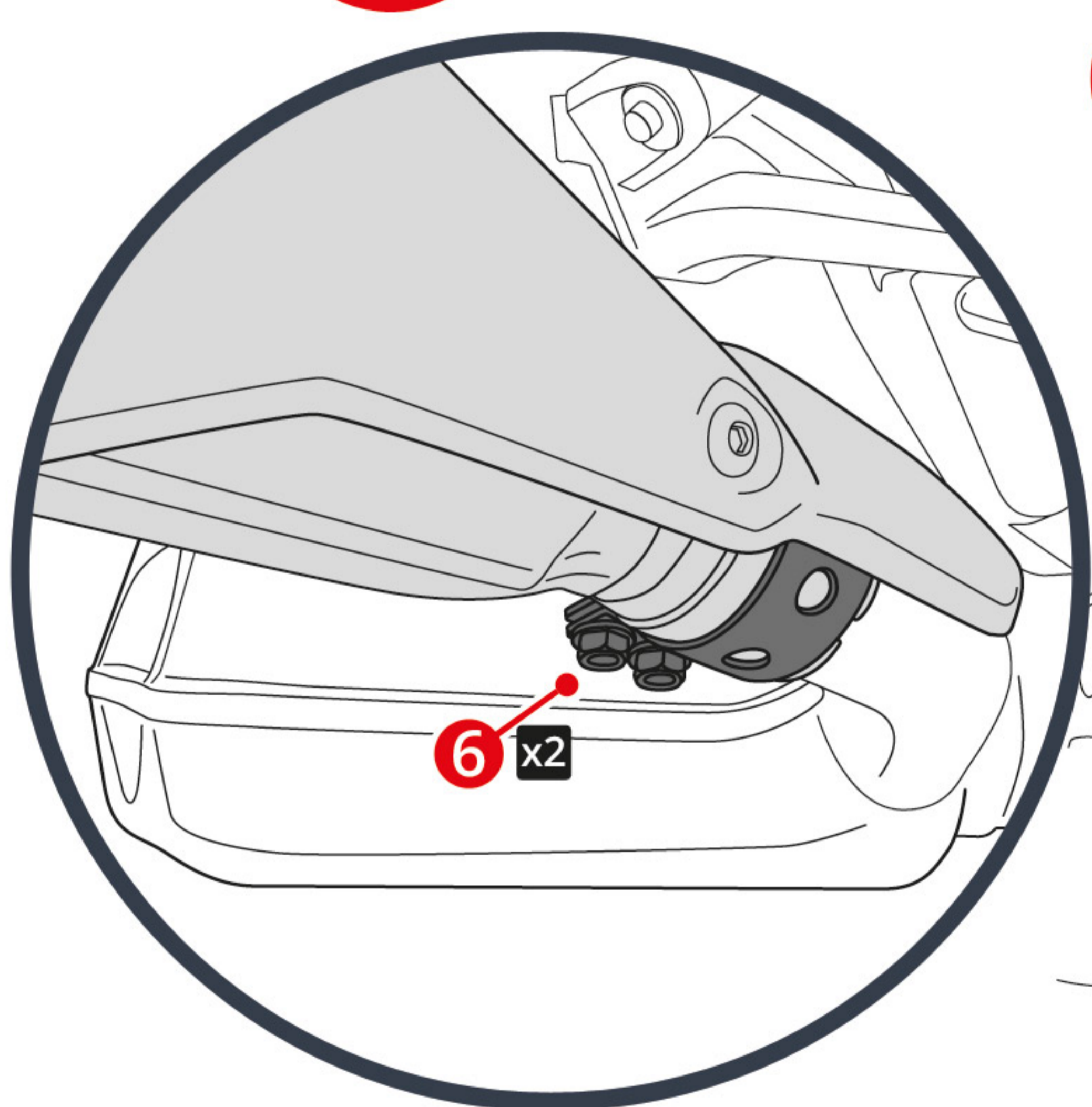


### Montage - Assembly

**4**



### **5** Schelle Clamp



### **6** Montage - Assembly

